

'The Instruction Sheet'

IPMS / Granite State Modelers Club Monthly Newsletter

Website: GraniteStateModelersClub.ORG

Email: GraniteStateModelers@Gmail.com

Visit us on Facebook: Granite State Modelers Club /
IPMS



Meeting Reminders: September 18, October 16, November 20, 2023

Weekly Zoom Build Sessions: Wednesdays 6-9pm; Saturdays 1-4pm; Sundays 6-9pm

Zoom Meeting Link – Copy and paste or right click to activate

<https://zoom.us/j/91436116803?pwd=NTIPU2dLUVdLYnR4SzhGL3hQaHBvQT09>

From My Bench

Hello Members,

This is mostly pertaining to our upcoming show and the importance of this year. Per usual we'll need help with setup and tear down, but this year we have access to the facility the day before so we will be setting up on Saturday October 14th as it will be easier than real early on Sunday. On show day we will need the usual help with teardown. Please contact Bob Ferri if you can help, he is coordinating setup at 2pm on Saturday. We have more tables this year and will probably use all the extenders.

Also new this year will be sponsoring a Make And Take table. We are in an area school district that has young ones and there seems to be an interest in doing one. John has received some easy snap kits so mostly it will require handing them out and some observing. For this we should have a minimum of two volunteers to observe and assist. A few more volunteers might be nice but we can use those folks if it works with the two.

The yearly call for raffle donations is also here. If you can donate some COMPLETE kits you will help our cause immensely.

For those who haven't been able to make the meetings, we need your help again but even more so this year. We are in a new venue and the excitement in the town is higher than anywhere else we've been previously.

TROPHY PACKS need to be sold!!!!!!!!!!!!!! You will probably see this elsewhere in the newsletter but this is my plea. Our trophy cost this year is higher than predicted so selling them is critical. If we can't sell them it could be a sign that we discontinue the show!! It's about paying the bills so we can continue to keep this tradition going.

We also have the Yankee swap builds due for Show and Tell this month. Let's see what they look like. Show them off to us. Be bold!!

For now, *Mac*

IPMS/GSMC meets for our general membership meeting on the third Monday night (4th Monday in Jan., Feb. & June) of each month from 7 PM to 9 PM at the Nashua Public Library, 2 Court Street Nashua, NH. Visitors are welcome; Show and Tell and Raffle are held each meeting.

Save The Date - October 15, 2023 - GraniteCon XXX

IPMS/Granite State Modelers annual static model display and contest

Weare Middle School, Route 114, Weare, NH Contact: Rodney Currier nickmatt2@roadrunner.com or 603-726-3876

August 2023 MEETING NOTES By Pete Davis

- Meeting started at 7:05
- We had no report from the Vice President.
- Our Treasurer posted \$125.00 in deposits and \$781.18 in expenses over the past month, mostly in refreshment costs for our picnic and show prep.

- Rod Currier advised there is a major election and need for voting on IPMS officers and a variety of changes to the IPMS Bylaws up for acceptance. John Rauscher pulled up the ballot and read off a quick condensed review of the Bylaw changes being requested. All club members who are IPMS members were encouraged to vote.

Club Officers:

President: *Mac Johnston*

(603)359-0595

macatflandersandpatch@hotmail.com

Vice President: *Rich Filteau*

(603)514-1604

r.filteau@comcast.net

Secretary: *Rodney Currier*

(603)726-3876

nickmatt2@roadrunner.com

Treasurer: *Edward Mele IV*

(603)203-9878

emeleiv@gmail.com

Newsletter Team:

Pete Davis - Content Editor

(603)759-2173

granduck@aol.com

John Rauscher – Contributor

(603)315-0751

JVR@gsinet.net

Rod Currier – Contributor
and Distribution

Bob Ferri – Formatting

Zoom Administrator

Bob Ferri - (603)547-7456

ferri@gsinet.net

Webmaster

Brandon Clifton

- Our Zoom coordinator had a major computer failure for a couple of days prior to the meeting but reported he is back in service again.

- Our key point of discussion was the upcoming show. The Board asked who would be available to assist in setup and operations for the event. They also pushed selling trophy packs as this is how we provide the great plaques for all the judged categories. It was strongly suggested that each member commit to sell at least one trophy package.

- It has become painfully obvious that our trophy costs will be going up dramatically next year, at least \$500 over current costs. We discussed that we may need to raise package prices or change our trophy materials, possibly going over to a system of medals instead, like other clubs have done.

- We also discussed raising table costs for the next show, as we had to absorb a greater cost for tables due to the change of venue and the need to increase the number of rented tables we require.

- Mac went down through the list of club participants and their usual jobs at the show to assure we had all positions covered, particularly relating to the entrance staff.

- Show positions are as follows:

Pete Davis - Announcements and kit raffle

Mac Johnston - Head judge with Bob Ferri assisting

Front table - Icie Cook, Karolee Currier, Tom Shanahan and Nate Clark (?)

Raffle equipment and forms – Rod Currier and Bob Ingalls.

Cash boxes – Ed Mele

Registration forms and ‘Do Not Touch’ table signs - Rod Currier

Securing table rental - Ed Mele

- The call was put out for raffle items for the show. We get little to no assistance from manufacturers anymore, so we need items donated. This is one of our biggest revenue producers for our show so we need to have a great selection of complete kits and accessories available.
- We want to get a good photo of the entry which takes Best of Show as it may be used to supply to any media that cover our event. We will be in the “Weare in the World” publication and may hopefully get some coverage from local television as well (fingers crossed).
- We will be able to advertise the show on the Town Hall exterior sign for the two weeks prior to the show, and possibly the sign outside the school.
- We will look into a gift certificate from Scale Hobbyist as our grand prize giveaway.
- John Rauscher is handling the vendors, and still has a few tables available. Also, he and Bob Ferri will develop a workable table plan for the space and will coordinate the table leg extensions.
- Club signs at the show will be handled by Mac and Rod.
- Setup will be at 7 AM on Sunday, with an early setup time for tables, etc. at 2 PM on Saturday afternoon prior to the show.
- The school PTO group will be providing a limited menu of food items in one of the classrooms near the gym where the show will be.
- John advised that Airfix is sending a number of kits for a Make and Take. We will need help at this table.
- Remember, we will need all club members to stay after the show to help with teardown.
- We were reminded that those of us who took part in the Yankee Swap last year must have their builds done to bring in for the September meeting Show and Tell.
- Rich Filteau talked about his trip to the annual International Experimental Aircraft Association fly-in at Oshkosh, Wisconsin, and showed a number of pictures he took of aircraft in action. He advised that there were 660,000 attendees at the show and over 10,000 private aircraft flown in for the event. He also provided a number of great photos of parked aircraft and the war bird area. There were around 3600 aircraft being actively shown during the show. He was very pleased to have been able to attend.
- Our annual club picnic at Bob Ferri’s home went off without a hitch until about 3 PM, when the skies opened up with a little shower. Fifteen club member and wives were able to enjoy the opportunity to get together and just socialize. Bob provided a great smoked brisket and, with all the dishes to pass and the wine supplied by Rod, it was a wonderful time enjoying each other’s company and the great New Hampshire outdoors!

- Raffle winners for this month: Rich Filteau John Rauscher Jim Rondeau

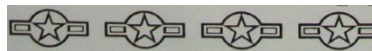
Rod's Ramblings - Secretary's Report - By Rod Currier

Once again it is getting near SHOW TIME! That means that we have a bunch of trophy packs left to sell!! Members have sold or bought some, but not nearly as many as needed. If each active member sold or bought just one, we can get close to our goal. Personally, I sponsor two awards each year. Many others do the same, and some do more. Our President usually takes the lead in sales, and has already done so this year. He has even found a sponsor for our "Best Of Show" award. Please don't leave it up to someone else. Pitch in and help out. We have many categories still available. Over 30 after our last meeting! Mostly regular categories at \$25 each.

We are even able to do a "Make and Take" this year, thanks to John Rauscher and Airfix. So we will need volunteers to help out with that. Raffle items are also needed. It doesn't need to be a model. Anything modeling related is welcome. If you do donate a kit (or kits) from your stash, please be sure to go through them and make sure they are complete. If a kit is complete but lacks decals, be sure to mark it on the outside of the box. Decals can be sourced by the winner, but other things such as missing parts are not, so leave those kits at home! No boxes of "spares" either, as one person's treasure is another's JUNK.

We need volunteers for judging, security, and for almost everything else! Any little bit you can do helps. Most things have been covered, but we always can use back up workers. For instance, those manning the registration tables could use a break every now and then to look around. Sometimes models need to be moved if a category becomes too large and help is needed. We need members to stick around after the show to tear things down. The more help we have, the quicker we all get to go home or to dinner.

Set up for vendors begins at 7 AM on Sunday October 15th. We will hopefully have the tables set up before then. General admission and model entry begins at 9 AM. Please attend if at all possible! Don't forget to wear your club shirts, and for the majority of us, their new GSMC name badges. The Weare PTO will be offering lunch items and snacks for sale, so please support them, too. It takes all of us to run a successful show!



Pete's Ponderings - By Pete Davis

Show season is almost upon us! Each year we get together for a day in a central location to celebrate the artistry and creativity of model builders from all over the New England states and beyond. Reminder...NEW LOCATION AND VENUE FOR 2023...mostly due to our usual venue being remodeled and the space being used for the storage of remodeling materials. Make sure you check out the directions and address for the new facility in Weare NH (no pun jokes, please...we have heard them all...). Same great show, new location!

I think it is interesting that we have seen a large growth of the overall penetration of this hobby since and during Covid. There are many newer modelers showing up at events and offering their own creations for review. I know the hobby shop local to many of us has seen a big influx of new customers during the past couple of years. There are now a lot of great 'how to' videos appearing on YouTube and other streams to help us all advance our skills and knowledge. Manufacturers around the world are creating more and more offerings and aftermarket materials to enhance our building experiences. New technologies are making small runs more affordable in creating unusual add-ons and accessories for the mainstream model offerings. This truly is a golden age of model building!

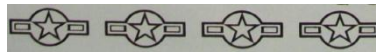
So how does this all tie together...?

We offer a show that provides new modelers with both access to great vendors, but also access to potential inspiration from the high quality of the work on display. It can be overwhelming when you first enter a hobby to have to try to wade through all the ‘fluff’ in looking to understand what particular subject or activity interests you most. In a show like ours, a new builder can experience a broad variety of subjects, building techniques, and access to other more seasoned model builders and their knowledge. He (or she) can score affordable kits from our vendors, with a wide variety of possible subjects to choose from. There is a great learning experience in understanding what goes into a successful model build through the evaluations performed by our teams of judges. The criteria they use are based on the standard skills needed to generate a clean, strong presentation, and can be very helpful to new hobbyists.

It also gives new young model builders a chance to learn what goes into developing into an effective creator. Our kit raffle can provide some great kits at a very cheap price, if the ticket holders are lucky. And we provide an environment which is conducive to positive connections and the start of a lifetime of creative enjoyment!

Our club motto, “We Don’t Nitpick!”, was created to assure everyone that we are not out there to criticize the number of rivets on a plane or the accuracy of a particular build in relation to actual examples. But, this one time every year, we do allow ourselves to comment on fit and finish in a positive way. It is our hope that this also will encourage more growth within the hobby and that we will continue to see new and exciting builds seeking to join the pantheon of great models in future years.

...and did I mention that we have a new LOCATION AND VENUE FOR 2023...?!!



GraniteCon XXX By John Rauscher

After what by all reports was a stupendous International IPMS show this year, its rolling around to show time back here in New England! It’s a busy schedule, with PatCon starting us off on Sunday October 1st in Hudson Mass. Next up is Classic Plastic on Sunday October 8th in Lawrence!

Northeast Military Modelers Association (NMMS) takes mid-October by storm with their Annual ArmorCon on Friday October 13th and Saturday the 14th. This makes for a tight schedule as we at GRANITE STATE MODELERS ALWAYS HAVE OUR SHOW THE THIRD SUNDAY OF OCTOBER! Let’s hope Patriot Chapter IPMS and NMMS can spread these other shows out for next year – sometimes venues get booked and there isn’t an alternative.

That brings us back around to our show on Sunday the 15th! We have a change of venue this year, as the Falls Event Center has been promising hotel renovations and with Covid delaying that, they finally started – only to disrupt our routine of a great central location off the highway.

Our new venue, at least for this years’ show, is the Weare Middle School, smack dab in, well, the middle of Weare! It’s a bright, well lit venue with easy access, and for a change of pace, Vendors and Displays will be in the same room, along with Pete’s famous, or infamous Raffle there too! The Weare PTO will be offering a light breakfast menu and lunch – burgers, dogs, chili and chips, with sodas and water available – all supporting our local Parent Teacher Organization!

Vendor tables are selling folks, so PLEASE get in touch with me if you haven’t reserved a table or tables yet. With the change in show layout, this will be a popular arrangement for folks to shop, AND have the displays all in one room! There will also be an Airfix USA (Hornby USA) sponsored Make And Take! This is a great opportunity for kids to engage in the hobby with a parent, by assembling and taking home an Airfix Quick Build kit! They sent us 6 each of 6 different models.

Prospective VENDORS can reach me through email at jvr@gsinet.net or call 603-529-5644,

Interesting factoid... In the early 1970’s, the USA IPMS President resided in, yup, Weare NH! Small world.

Directions To GraniteCon XXX

GraniteCon XXX will be held at the Weare Middle School, 16 E Road, Weare NH. The school is located on the east side of Rt.114, with the entrance located on E Road which is at the blinking yellow light in the center of town (the only traffic light in town).

From Concord - Take I-89 Exit 2 and head west on Rt.13 (up the hill) – You will come to the blinking light at the junction of Rt.13 and Rt.77, continue straight onto Rt.77 – About 6.5 miles further you descend a hill into the 30 MPH zone – The next left will be Center Road, which cuts the corner when going south on to Rt.114. Center Road is 0.9 miles long and will end at Rt.114. Turn left at the stop sign and proceed south on Rt.114 - The school entrance will be 0.6 miles on the left just past the American Legion Post. The entrance is on E- Road, turn left at the blinking light and the school parking lot entrance is the next right. Total time from I-89 Exit 2 to the school is less than 25 minutes.

From Manchester - Take Rt.101 towards Bedford, At the Rt. 101/Rt.114 junction stay to the right at the lights and proceed straight onto Rt.114 towards Goffstown - Stay on Rt.114 through Goffstown and into Weare – Approximately 17 miles from the Rt.101 junction you will come into the village of Weare, speed will drop to 30 MPH as you pass the TD Bank – The school entrance will be less than ¼ mile on the right, drive past the school until you reach the blinking light the junction of E Road, turn right and the school parking lot entrance is the next right. Total time from Rt.101/Rt.114 junction to the school is less than 35 minutes.

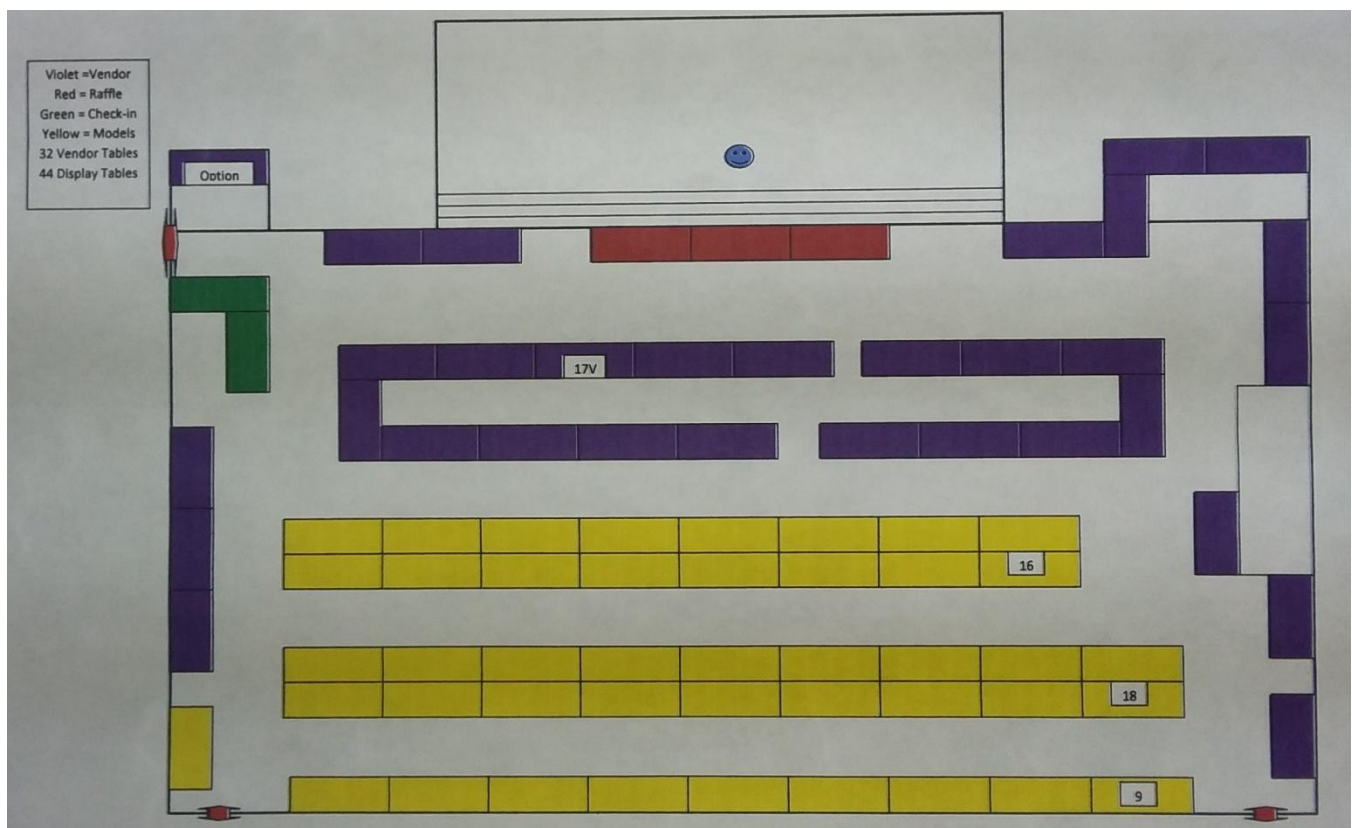
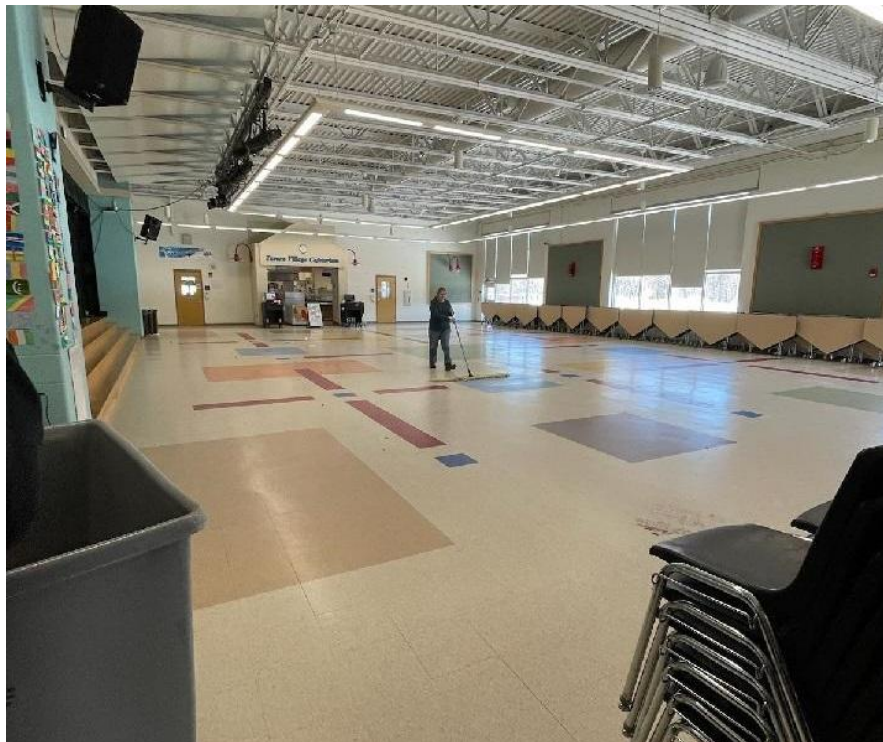
From The Editor's

Our club Newsletter Editorial and Layout staff are in need of content from all segments of our hobby for the newsletter. Subject matters of interest include ships, armor, aircraft, sci-fi, figures, 3-D printing, scratch building, kit bashing and railroading. We are looking for articles on modeling tips, kit reviews, build articles, historical information and general model discussion of kits and techniques. Any and all submissions are welcome, this is our club newsletter and all are welcome to contribute. Submit all articles to Pete Davis at granduck@aol.com. Thank You.

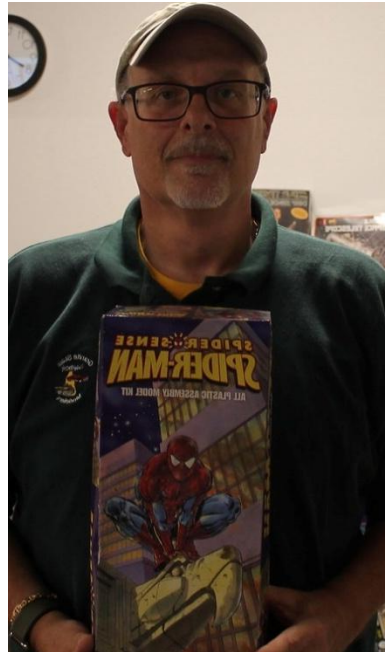
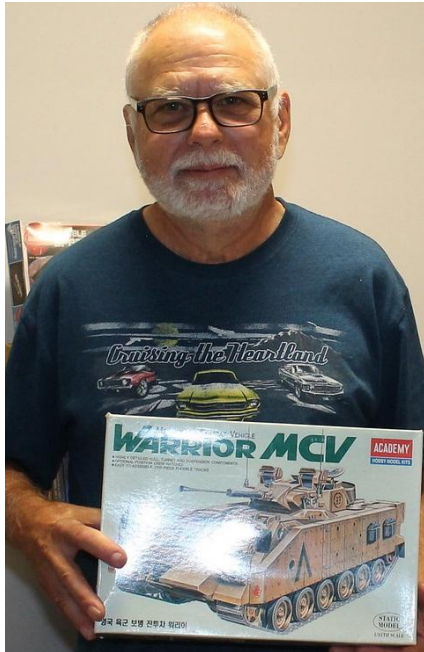
Upcoming Modeling Events Of Interest

- October 1, 2023 _ PatCon 2023 IPMS/Patriot Chapter – Hudson Elks Lodge, 99 Park Street, Hudson, MA
Contact: ipmspatriot.org/
- October 15, 2023 – GraniteCon 30 IPMS/Granite State Modelers – Weare Middle School, Route 114, Weare, NH Contact: Rodney Currier nickmatt2@roadrunner.com or 603-726-3876
- November 5, 2023 – Baycon 2023 IPMS/Bay Colony – Franklin Elks Lodge, 1077 Pond Street, Franklin, MA Contact: Robert Magina treadhead@comcast.net or 508-695-7754

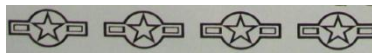
Here is an image of the Weare Middle School cafeteria and the proposed floor layout. The layout is subject to change as we get closer. The entrance hall is along the left wall. The smiley face on the stage will be our longstanding Raffle Manager and Announcer Guy.



September Raffle Winners!



New Member Jim Rondeau, Show Vendor Coordinator John Rauscher, VP Rich Filteau



Show and Tell

Many more higher resolution images can be found on the web site!



*Due to GraniteCon XXX articles,
Show and Tell content may be smaller than
normal.*

Long time member Bob Fiero showed off his 1/72nd scale Hasegawa F-16C aircraft. He was impressed by the fact that this 40 year old aircraft design is still going strong. It has 9 hard points for mounting munitions. He painted before final assembly. The kit decals were old but he was able to work with them.



Tom Shanahan brought in his 1/72nd scale Hobby Boss Russian Ural-4320 truck. He built it out of box and painted in Model Master armor green. He marked it as a vehicle used by Czechoslovakia. The only issue he had was the thin glazing (clear parts), which he cracked a rear window installing.

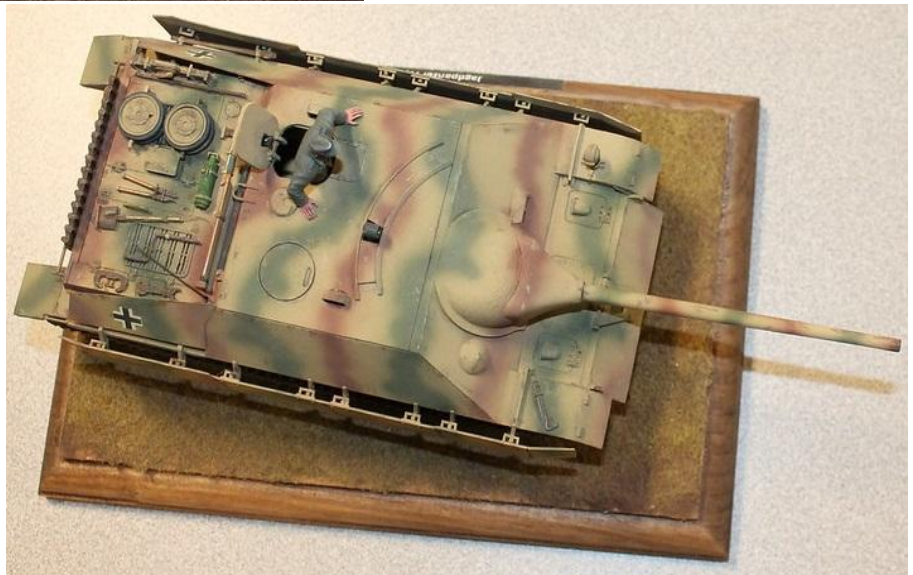


Russell Gosselin brought in two 1/35th scale Dragon kits. The first was a German SdKfz C command vehicle. This is a work in progress. He plans to wire the radio sets and all antennas. Russ' second model was another SdKfz 251 C. This is also in progress and is out of the box except for added stowage. He feels building these is a lot like doing aircraft...you use the same techniques to achieve your final result.





John Walker showed his 1/35th scale Tamiya Jagdpanzer IV/70 (V) which was an out of box build. He had given the kit to his son 23 years ago. He reworked the errors left over from that build, making the build more accurate. It featured rubber band tracks. He used Tamiya paints. He blended overspray with lightened colors. Pastel chalks were used as weathering. He had applied this over a quick Shine surface coat (much like Future Floor Polish but less glossy).



For I.P.M.S. membership, go to **MYIPMSUSA.org**
Membership page for details and membership forms



Rich Filteau showed his 1/48th scale Revell/Monogram Republic F-84E Thunderjet which he built out of the box. He painted it to replicate a plane from the Korean conflict. He added buzz numbers on the side and explained how they were used for identification purposes.



Frank Moore brought in a 1/32nd scale Monogram Mobilwagon 3.7 cm anti aircraft tank. He used the lower hull and running gear from a MK4-H as the basis for the Flakpanzer conversion.



Frank also had a creative way to use leftover parts from the MK4. He took the 1/32nd scale Monogram turret and turned it into a static pillbox diorama.



Finally Frank offered up his 1/35th scale Panzerkampfwagen 4, a Nichimo kit. He got the kit at the GraniteCon event last year. The markings, camouflage, and flags represent the 19th Panzer Division in Warsaw, Poland in September 1944.





Another of Frank's offerings was a 1/32nd scale Monogram Ostwind Flakpanzer which he crafted from a 'scratch and dent' model kit he picked up.

Frank brought in a 1/8th scale US Infantry officer work in progress. It was made in China and he bought it at a craft store for \$5.99. The material it was molded in was indeterminate but quite heavy.





Pete Davis had his 1/1500th scale Hasegawa Captain Harlock Starship Arcadia. He had wanted the kit ever since he found the anime show and got hooked on it. It is a fairly easy kit to build, but he accidentally dropped it halfway through and had to repair the broken bits. It was a masking challenge also with all the colors, and the decals turned out to be difficult to work with. He ended up painting many of the features that were supposed to have decals. Those that were in the kit were not designed to completely cover the stern, which he ended up finishing with a gold Dspaie paint pen. He painted the base to look like a star field mat image as in the show, and kept the weathering minimal to enhance the cartoon feel of the model.

Hobby Shop Directory

These are the hobby shops that support us and our efforts year after year. Most give our club members discounts. They support our club contests, and stock the supplies and new kits we crave. Please support them!

Hobbies With A Twist, LLC - 1 Depot St Concord, NH (603-223-0132)

Granite State Hobbies - 20 Pleasant St. Claremont, NH (603-504-5605) ajmsugaring@icloud.com

Minuteman Scale Models - 472 Amherst St. Suite 21 Nashua, NH (603-921-5048)



Boomers Books & Empire Models & Molly Stark Bindery - 273 N Stark Hwy
Weare, NH 03281 (603-529-5644) - BoomersBooks.net

NORTH EAST TRAINS

Specializing Lionel • American Flyer • Atlas
in . . . MTH • Williams • Weaver • K-Line

Bought • Sold • Repaired
N • HO • S • O • G Gauges



www.netrains.com
18 Main Street
Peabody, MA 01960

Don Stubbs
(978) 532-1615
fax (978) 532-2282

Why Grow Up?

HOBBY
Emporium

MODEL KITS, TRAINS & ROCKETS, PUZZLES, AND PAINTS
& SUPPLIES

978.649.5055

440 Middlesex Rd Tyngsboro, MA 01879

THE **SpareTime** SHOP

WWW.SPARETIMESHOP.COM

Models, Hobbies, GUNDAM, Rockets, HO-N Trains, Books, Magazines, Scenery,
UGEARS, METAL EARTH, Pinocar, Science Kits, Slot Cars, Pre-Built, Paints, Tools

222J East Main Street, Post Road Plaza, Rte 20 East, Marlborough MA

t (508) 481-5786
f (508) 229-2592

ski@sparetimeshop.com

Our **49th** Year

SAVE THIS CARD

OWNERS
PAUL/THERESA SCOPETSKI

CLOSED: M/Tu OPEN: W-Sat 10-5; Sun 12-5



Double Play Hobby
Consignments

479 Elm Street (101A)
Milford, NH 03055

M-F 12-6 Sat 10-5 Sun 12-4


Bill Greenwood 603-582-4224

doubleplayhobby@yahoo.com

http://doubleplayhobbyconsignments.com

New Show And Tell Description Form

We have generated a new form for meeting Show and Tell descriptions. This will give us the details needed to post in the newsletter along with images of your models. Ideally, you can print the page and cut out the form to use. We will also get it posted to the web site for download. Copies will be available at the meetings to fill out.

 <p>Description:</p>	<p>Builder: _____</p> <p>Subject: _____</p> <p>Kit Mfg: _____</p> <p>Scale: _____</p>

GSMC Dues Payment Form

Member Names:

Mailing Address:

E-Mail Address:

Telephone # :

IPMS/USA Member?	Yes	No	If Yes - IPMS Number:	Expiration Date:
------------------	-----	----	-----------------------	------------------

Dues Are \$20 Per Year For a Single Member And \$25 Per Year For A Family

Make Checks Payable to: **Granite State Modelers Club**

Please Return This Form With Your Dues Payment To:

Rodney Currier
8 Strawberry Lane
Thornton, NH 03285